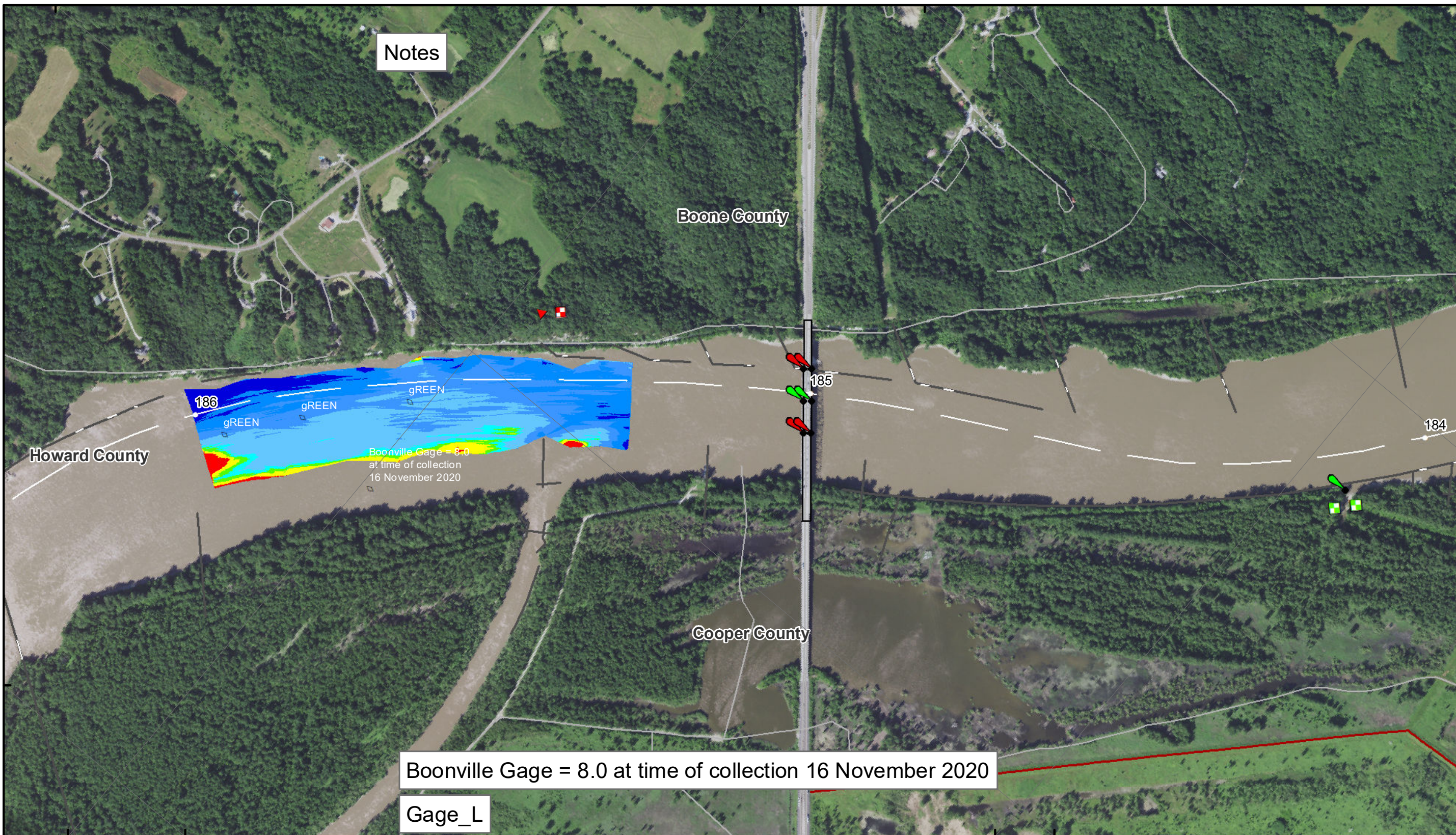


92°33'W

38°58'N

92°32'W



Notes

Boonville Gage = 8.0 at time of collection 16 November 2020

Gage_L

92°34'W

38°56'N

92°32'W

Boone County

Howard County

Cooper County

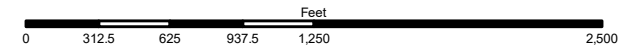
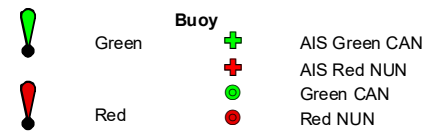
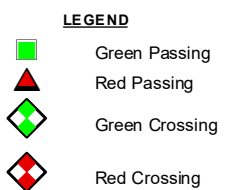
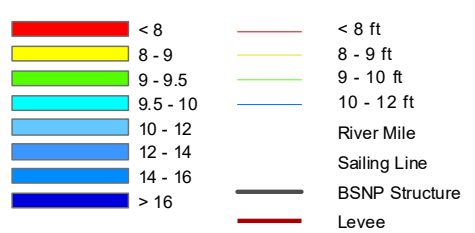
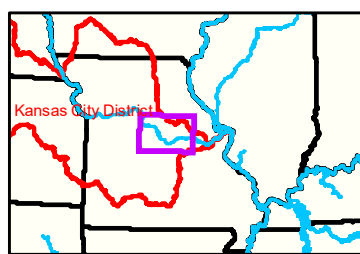
185

186

184

38°58'N 92°34'W

38°56'N 92°33'W



NOTES:
 Horizontal Coordinate System:
 World Geodetic System of 1984 (WGS84), projected to the Universal Transverse Mercator (UTM) Zone 15 North. Distance units in U.S. Survey Feet
 Vertical Datum:
 Soundings are shown in feet and indicated depths are referenced to water surface at time of collection.
 The information depicted on this map represents the results of a survey conducted on the date indicated and can only be considered to represent the general condition existing at that time.
 The location of navigation aids are based on and provided by the U.S. Coast Guard.



Disclaimer: The U.S. Army Corps of Engineers (USACE) provides this information as a service to the public. It is not intended to be used for any purpose other than that for which it was intended. The USACE makes no warranty, express or implied, regarding the accuracy, reliability, or completeness of the information provided. The USACE is not responsible for any errors or omissions in this information, or for any consequences arising from the use of this information. The user assumes all liability for any use of this information. The USACE makes no representation or warranty of any kind, express or implied, regarding the accuracy, reliability, or completeness of the information provided. The USACE is not responsible for any errors or omissions in this information, or for any consequences arising from the use of this information. The user assumes all liability for any use of this information.

KANSAS CITY DISTRICT MISSOURI RIVER AREA OFFICE	
Submitted By:	MRAO
Reviewed By:	MRAO
Approved By:	MRAO

Survey Information
 MO_02_LMR
 MO_02_LMR_20201116_CS_185_3_186_0_SORT
 16 November 2020

Sheet Number
 39 of 46

92°36'W

92°35'W

92°34'W

Notes

Howard County

Boone County

Cooper County

188

187

Boonville Gage = 8.0 at time of collection 16 November 2020

Gage_L



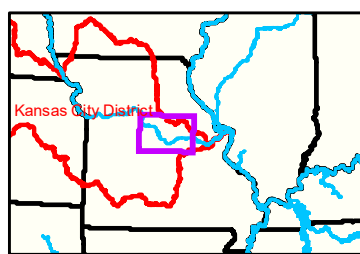
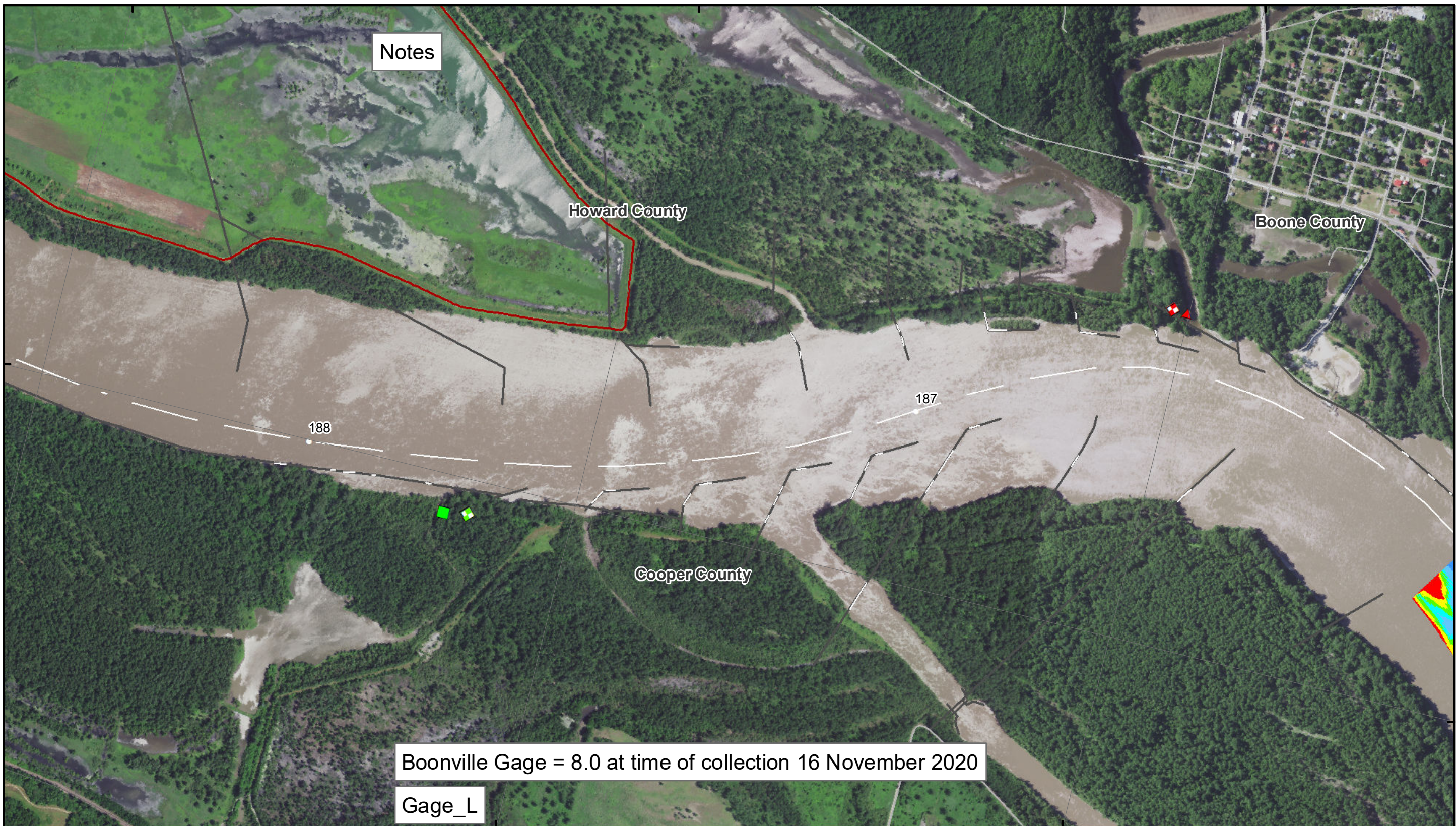
DISCLAIMER: The U.S. Army Corps of Engineers provides this information as a service to the public. It is not intended for use in any legal proceeding or as a basis for any claim. The Corps makes no warranty, express or implied, regarding the accuracy, reliability, or completeness of the information. The user assumes all liability for any use of this information. The U.S. Army Corps of Engineers is not responsible for any errors or omissions in this information. The U.S. Army Corps of Engineers is not liable for any damages, including consequential damages, arising from the use of this information. The U.S. Army Corps of Engineers is not responsible for any loss of data or information. The U.S. Army Corps of Engineers is not responsible for any loss of profit or business. The U.S. Army Corps of Engineers is not responsible for any loss of income or other financial loss. The U.S. Army Corps of Engineers is not responsible for any loss of reputation or other non-financial loss. The U.S. Army Corps of Engineers is not responsible for any loss of life or personal injury. The U.S. Army Corps of Engineers is not responsible for any loss of property or other physical damage. The U.S. Army Corps of Engineers is not responsible for any loss of data or information. The U.S. Army Corps of Engineers is not responsible for any loss of profit or business. The U.S. Army Corps of Engineers is not responsible for any loss of income or other financial loss. The U.S. Army Corps of Engineers is not responsible for any loss of reputation or other non-financial loss. The U.S. Army Corps of Engineers is not responsible for any loss of life or personal injury. The U.S. Army Corps of Engineers is not responsible for any loss of property or other physical damage.

KANSAS CITY DISTRICT MISSOURI RIVER AREA OFFICE	
Submitted By	MRAO
Reviewed By	MRAO
Approved By	MRAO

Survey Information

MO_02_LMR
 MO_02_LMR_20201116_CS_185_3_186_0_SORT
 16 November 2020

38°58'N



92°35'W

LEGEND

	< 8		< 8 ft		Green Passing		Green		AIS Green CAN
	8 - 9		8 - 9 ft		Red Passing		Red		AIS Red NUN
	9 - 9.5		9 - 10 ft		Green Crossing		Green		Green CAN
	9.5 - 10		10 - 12 ft		Red Crossing		Red		Red NUN
	10 - 12		River Mile		BSNP Structure		Junction		
	12 - 14		Sailing Line		Levee				
	14 - 16								
	> 16								

92°34'W

Feet

0 312.5 625 937.5 1,250 2,500

NOTES:
 Horizontal Coordinate System:
 World Geodetic System of 1984 (WGS84), projected to the
 Universal Transverse Mercator (UTM) Zone 15 North.
 Distance units in U.S. Survey Feet

Vertical Datum:
 Soundings are shown in feet and indicated depths
 are referenced to water surface at time of collection.

The information depicted on this map represents the results of a survey
 conducted on the date indicated and can only be considered
 to represent the general condition existing at that time.

The location of navigation aids are based on and provided by
 the U.S. Coast Guard.

Sheet Number 40 of 46